



October 10, 2007  
Incorporated Administrative Agency  
Japan Nuclear Energy Safety Organization (JNES)

## **Creation of Seismic Safety Division**

Japan Nuclear Energy Safety Organization (JNES) has created the Seismic Safety Division on October 10, 2007 to enhance its organizational capability for seismic safety related work that is expected to increase to meet the increasing safety regulatory needs after the impact of the Niigataken Chuetsu-Oki earthquake on the Kashiwazaki–Kariwa Nuclear Power Station.

It is of increasing importance to fulfill accountability for seismic safety of the nuclear power stations to the public as a result of the suffering of the Kashiwazaki–Kariwa Nuclear Power Station from the Niigataken Chuetsu-Oki earthquake in July this year and the revision of the Examination Guide for Seismic Design of Nuclear Power Reactor Facilities in September 2006 (by the Nuclear Safety Commission), etc.

It has become an urgent nuclear regulatory issue to address this promptly and appropriately and to ensure accurate evaluation/confirmation of seismic safety of the nuclear facilities.

Under such circumstances, JNES, as a technical support organization for the Nuclear and Industry Safety Agency (NISA), has to be prepared for the seismic safety related work that is expected to increase to meet the increasing safety regulatory needs.

In addition, as Japan is one of the countries with the most frequent earthquakes and has a rich accumulation of earthquake experiences, JNES which plays a part of the nuclear safety regulation in Japan is expected to function as an international center in the field of seismic safety.

JNES has to enhance its organizational capability to answer the above-mentioned expectations.

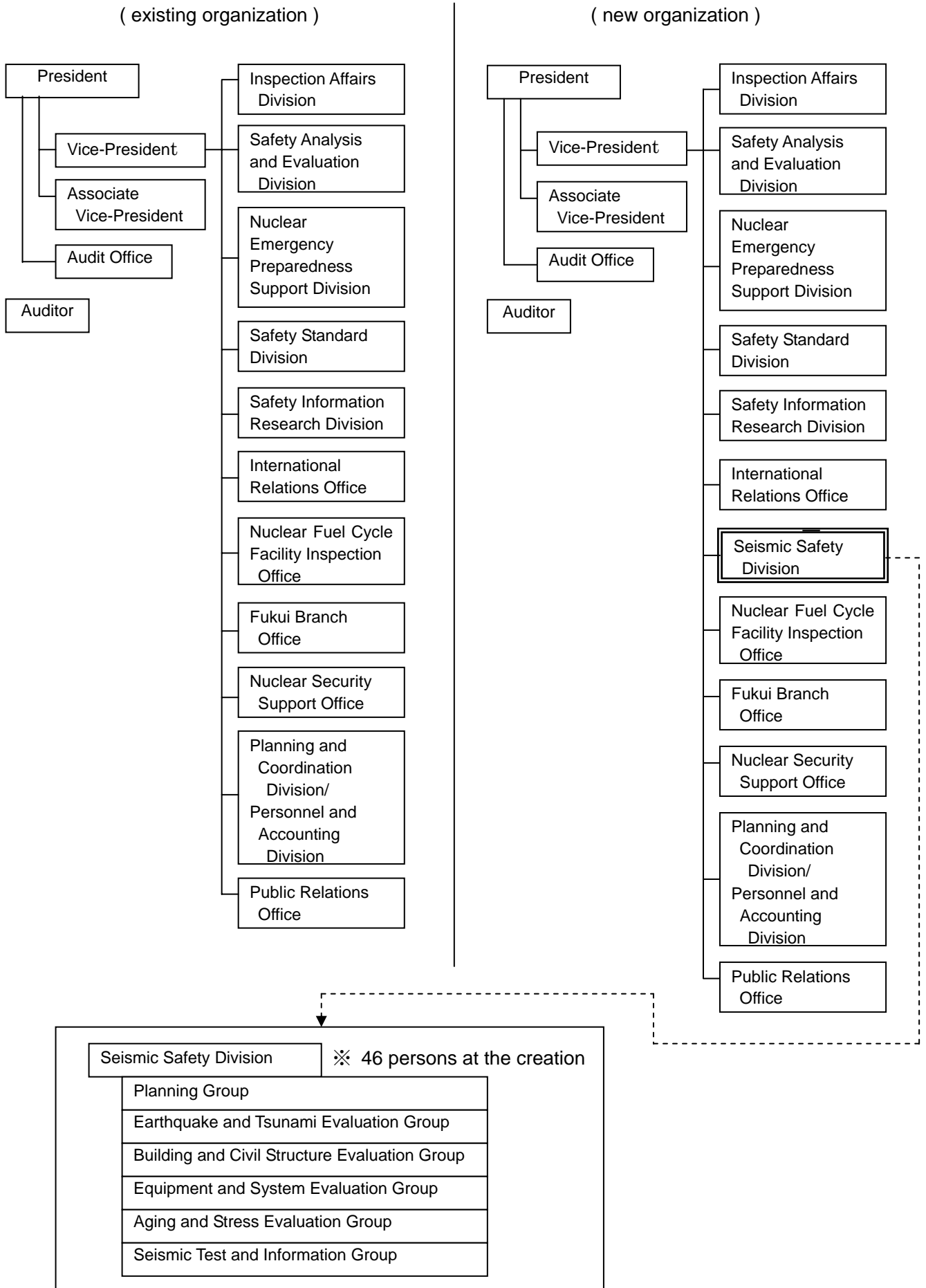
To further enhance its organizational capability, JNES has created "Seismic Safety Division" to integrate the seismic/structural expert divisions that have been separately working up to now. This enhances JNES's capability in this technical area and enables it to conduct the seismic safety related work in more consistent and integrated way.

This reorganization will help both JNES and NISA to ensure further improvement of the reliability of seismic safety through even closer cooperation between the two organizations.

The Seismic Safety Division will work for a wide range of seismic program including analysis and evaluation for retrospective seismic evaluation\* for existing nuclear facilities, various seismic R&D activities, collection/maintenance/provision of seismic safety data and cooperation with the International Atomic Energy Agency (IAEA) in formulating international seismic safety standards.

\* Re-evaluation of seismic safety of existing nuclear power plants and other nuclear facilities in accordance with revised "Examination Guide for Seismic Design of Nuclear Power Reactor Facilities.

(Reference 1) Reorganization associated with creation of Seismic Safety Division



(Reference 2) Japan Nuclear Energy Safety Organization (JNES)

JNES was established on October 1, 2003 to establish the basis to ensure the nuclear safety in nuclear utilization for energy by conducting the inspection, etc. of nuclear installations and nuclear reactor facilities as well as performing the safety analysis, evaluation, etc. of the design of nuclear installations and nuclear reactor facilities. JNES is an incorporated administrative agency composed of about 450 of staff members and is operated with 23 billion Japanese yen of annual operation fund from the Japanese government.